

Grooming Tools

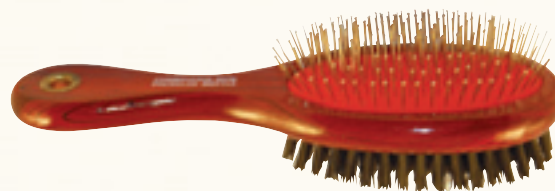


GROOMING AND ACCESSORIES



Shedding Blade

#745 Removes dead and excess hair for a healthy well groomed look. Non-magnetic with a leather handle.



Combo Brush

#744 Pin Brush on one side for medium and long hair. Bristle Brush on other side for short hair and a finished grooming.



Heavy Duty nail clipper

#74205 Heavy duty nail clipper. Cuts from both sides eliminating nail splitting. Heavy duty for larger dogs.



#740 - DOG COMB 7 1/2" comb. Large teeth pull through tangled and twisted hair.



#742 - DOG NAIL CLIPPER
Easy control with spring-loaded action and safety stop bar.



#741 - PIN BRUSH Use for medium and long haired dogs. Features safety rubber tipped pins.

Dummy Key Chain



#88888 - Size 1" x 2"

Pop Open Travel Bowl



#75101

#75100

- Built in Flexi-Frame pops open in seconds.
- Folds flat for easy storage.
- Holds 3/4 gallons of water.
- Great for travel.
- Set up size: 9"H x 9"W x 4"D.

Colors: Camo or Green



#743 - SLICKER BRUSH Curved wire brush for removing burrs and weeds after days hunt. Also excellent for loose and shedding hair.



Stainless Steel Dishes

Use for food or water, will not rust, dishwasher safe, easy to clean, tapered for easy stacking.

#752 - 2 quart

#753 - 3 quart

#754 - 5 quart